

A kaleidoscope of colours with APMG

APMG offers an exciting variety of product colours and finishes to customise and add impact to your laboratory and educational furniture. If you want to reflect corporate branding or simply introduce a pop of colour to your design, just speak to us – we're design experts. And don't forget – colour can influence mood, enhance learning and improve productivity.

Check out the selection below and if you don't find what you're looking for, [ask us](#). Our team will be more than happy to source what you need to give you precisely the result you're looking for. Please be aware that non-standard colours typically incur a small additional charge and can occasionally affect lead times. These product options are marked with a ♦.

The accuracy of the colours displayed may vary depending on your monitor and printer settings. We use RAL colours and also offer some British Standard colours and these codes start with BS. **APMG recommends** you ask us for samples if you **require an exact** colour match.

Page	Product colour palette
3	Trespa® TopLab®BASE
5	Trespa® TopLab®PLUS
6	Cast epoxy
7	Carcasses
8	Edgebanding
9	Plinths
10	Handles
12	Metalwork
15	Textured metalwork
16	Gratnells trays



Work surfaces

Materials specified for laboratory furniture and for classrooms need to be extremely durable, scratch resistant, chemically resistant and easy to clean.

APMG recommends Trespa® TopLab®BASE for applications where high scratch and wear resistance are of great importance. This heavy-duty surface will deliver good chemical resistance, offers excellent resistance to wear and tear and is ideal where severe use and frequent cleaning is anticipated. It is particularly suited to schools, with the exception of A Level Chemistry laboratories.

For laboratory applications requiring higher chemical resistance **APMG recommends Trespa® TopLab®PLUS**. Specifically, this material is suitable for university, industry and A Level and GCSE Chemistry labs. It offers superior performance: inherent antibacterial properties, high resistance to a wide range of aggressive chemicals, high impact and scratch resistance.

APMG recommends cast epoxy worktops where chemical resistance is the highest priority. This is the standard worktop for APMG's Airform range of fume cupboards.

Epoxy resin is durable, extremely chemical and stain resistant, mechanically strong, easily cleaned and decontaminated.

See the colour charts for APMG standard colours available for Trespa® TopLab® PLUS and BASE and for cast epoxy. If you require a non-standard option, marked ♦, we will happily source it.

If a hardwood surface is required, **iroko and beech** worksurfaces are available. **APMG recommends** cost-effective and environmentally friendly Texwood Iroko. Made up of smaller strips of wood, less material is wasted during manufacture. Traditional planks can be sourced however, these will attract a premium price.

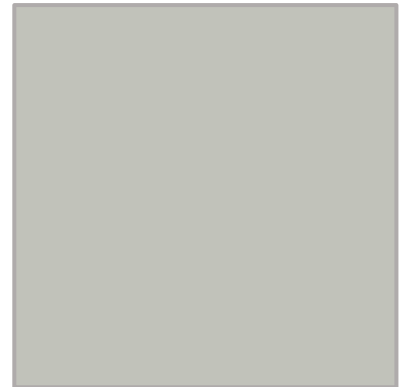
Trespa® TopLab® BASE colour palette



E0-00 White



E0-015 Pastel Grey



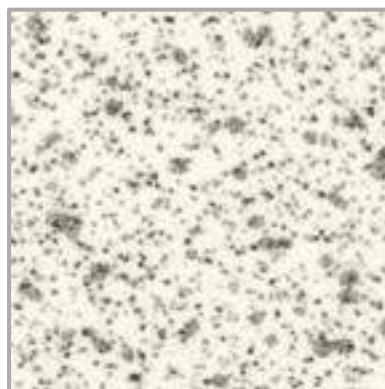
E0-02 Silver Grey



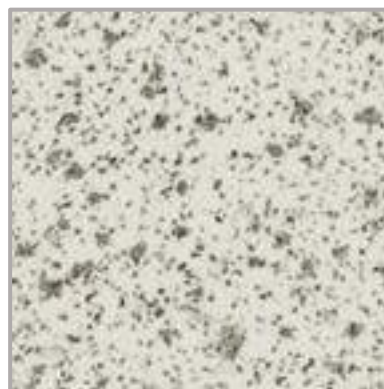
E0-04 Mid Grey



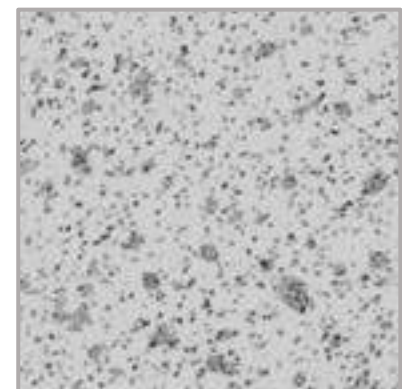
E25-01 Icy Blue



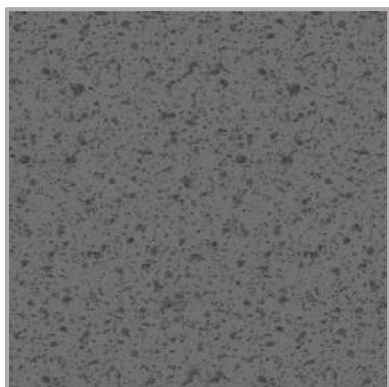
S0-00 Speckle White



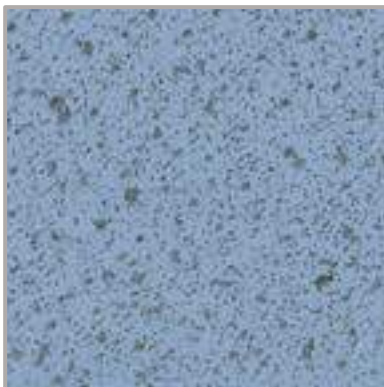
S0-015 Speckle Pastel Grey



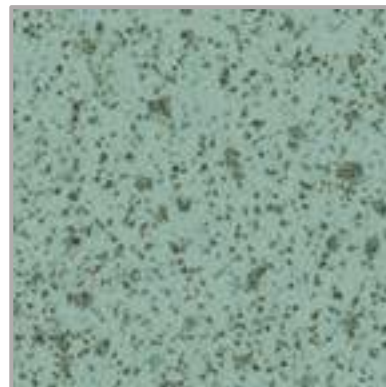
S0-02 Speckle Silver Grey



S0-04 Mid Grey



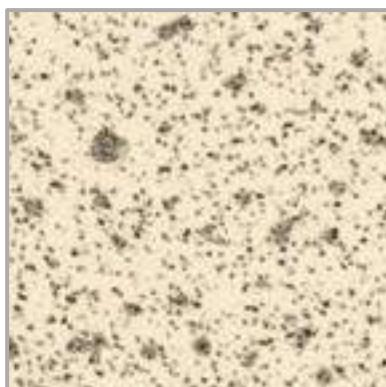
S17-32 Speckle Powder



S0-12 Speckle Aquamarine



S25-01 Speckle Icy Blue



S3-01 Speckle Sand

Trespa® TopLab® PLUS colour palette



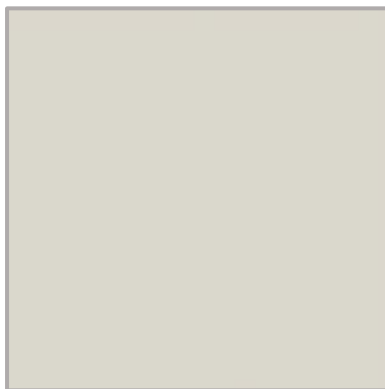
T05.0.0 Pure White



T03.0.0 White



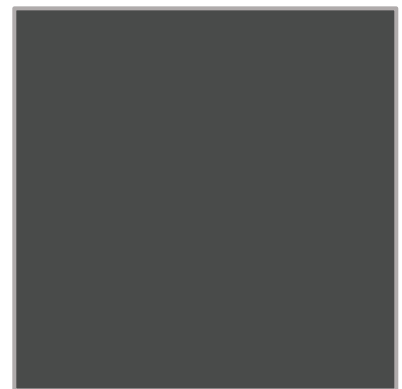
T21.1.1 Glacier Blue



T03.1.0 Pastel Grey



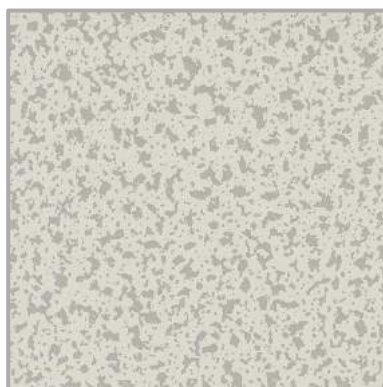
T03.4.0 Silver Grey



T70.0.0 Slate Grey



T90.0.0 Black



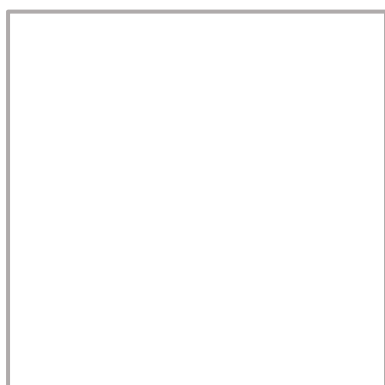
D02.1.0 Pastel Grey/Silver

TRES|PA®

Cast epoxy work surfaces colour palette

APMG recommends cast epoxy worktops where chemical resistance is the highest priority. Epoxy resin is durable, extremely chemical and stain resistant, mechanically strong and easily cleaned and decontaminated. It exhibits good fire resistance and fire propagation properties.

It cannot delaminate and has the same properties throughout its entire thickness. It can be moulded into a wide range of different sizes to cater for the most exacting lab specification.



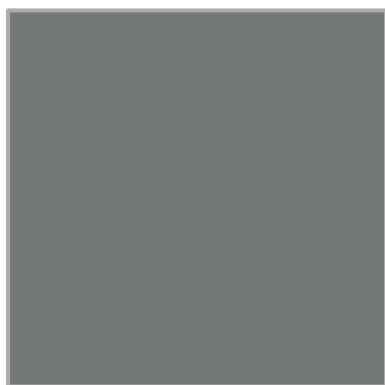
White



Ivory



Grey



Dark Grey ♦



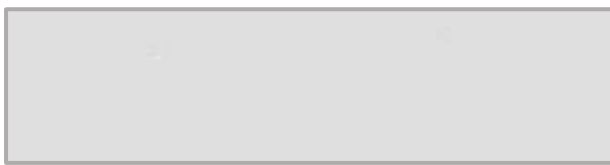
Black ♦

Carcasses

This colour chart is a guideline for APMG standard colours for furniture carcasses. If you require a non-standard colour we will happily source it.

If you're likely to want replacement cupboards **APMG recommends** its standard carcass colour range. We can guarantee we will still be able to colour match these in 5 years' time.

Carcass colour palette



7035-T light Grey



9016-T Glacier White

APMG recommends matching the plinths and edgebanding to the carcass colour for maximum impact – see our ranges and [ask us](#) for details.

Edgebanding

APMG recommends PVC edgebanding, and we offer this as standard due to its enhanced chemical resistance. Typically, APMG edgebanding comes in a pearl textured finish for extra durability and scratch resistance.

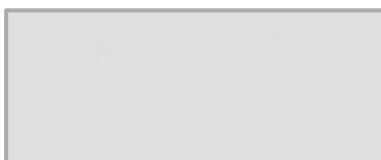
See the colour chart below for furniture edgebanding colour options. If you require a non-standard colour we will happily source it. There is a limited palette in addition to our standard range, please ask us for details.

If you want to reflect your corporate branding or incorporate colour for maximum impact talk to us about matching your edgebanding, handles, socket boxes, coat hooks and trays.

Edgebanding colour palette



9016-T Glacier White



7035-T Light Grey



7012-T Dark Grey



9005-T Deep Black



BS 20 D 45-T Blue



5013-S Cobalt Blue



6005-T Green



3000-T Red



3011-S Maroon

Plinths

As plinths are likely to come into contact with water during floor cleaning, **APMG recommends** they are manufactured from moisture resistant MDF for longevity. All standard APMG plinths use this material.

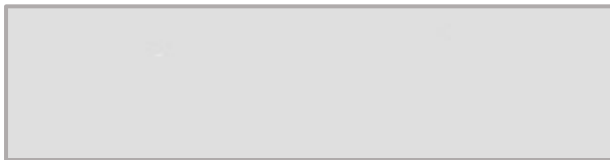
Plinth colour palette



9016 Glacier White



9005 Deep Black



7035 Light Grey



7012 Dark Grey

Handle styles and colours

APMG offers an extensive variety of handles to complement, customise and add impact to your laboratory and educational furniture. Choose from inset, bow and bar styles to extruded aluminium profile and specialist models such as anti-ligature handles.

With our own paint shop on site we offer a selection of colours and finishes that can reflect your corporate or school branding or simply introduce a pop of colour to your design. Just speak to us – we're design experts.

To help you make your choice here is a small selection of our most popular handle styles.



Stainless Steel D Handle
96 mm centre & 128 mm centre
Reference:
APMG 1-96D
APMG 2-128D



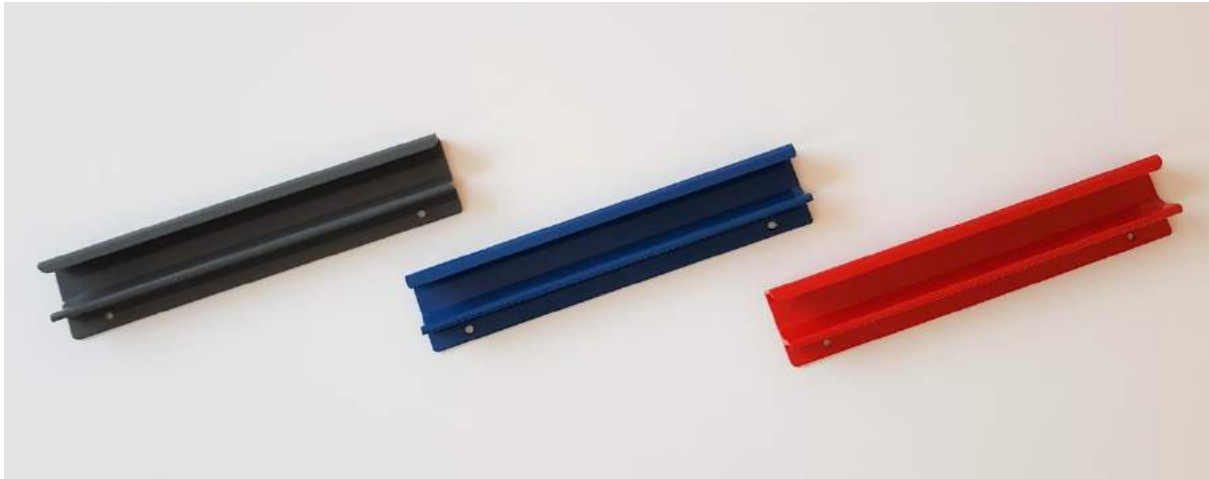
Stainless Steel Bow Handle
160mm centre
Available in satin steel finish only
Reference:
APMG 3-160B



Matt Nickel Lay On
Reference:
APMG 4-LO



Matt Nickel Finish Inset
Reference:
APMG 5-IS



Aluminium Powder Coated Finger Pull Extruded Handle
Reference:
APMG 6-EX

Choose your colours

We can powder coat our handles with the colours shown on pages 12-14 with the exception of our APMG 3-160B which is standard satin steel finish.

Metalwork colours

APMG has its own in-house steelwork and powder coating departments and offers a wide selection of colours as standard for metal frames, cantilever legs, cupboard handles and electrical boxes. If you require a colour we don't hold as standard we will happily source it.

We use RAL colours and offer some British Standard colours; these codes start with BS. All finishes are smooth unless stated otherwise.

Metalwork colour palette



BS 10B15S



RAL 1000S



RAL 1015S



BS 08C31S



RAL 1016S



RAL 1017S



RAL 1018S



RAL 2004S



RAL 3000S



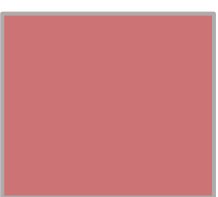
RAL 3011S



BS 04D45S



RAL 3012S



RAL 3014S



RAL 3017S



RAL 3020S



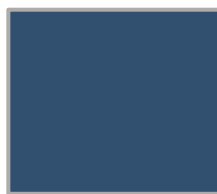
RAL 4005S



RAL 4008S



BS 24C39S



RAL 5000S



RAL 5002S

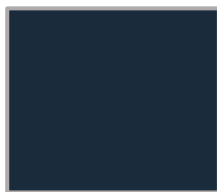
Metalwork colour palette continued



RAL 5005S



RAL 5010S



RAL 5011S



RAL 5013S



BS 20D45S



RAL 5014S



RAL 5015S



RAL 5017S



RAL 5018S



RAL 5023S



RAL 6018S



RAL 6019S



RAL 6021S



RAL 6024S



RAL 6026S



BS 12E53S



RAL 6027S



RAL 6029S



RAL 6033S



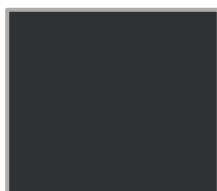
RAL 7001S



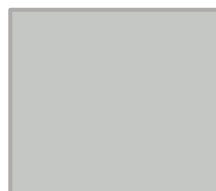
RAL 7009S



RAL 7012S



RAL 7021S



RAL 7035S



RAL 7038S

Metalwork colour palette continued



RAL 7040S



RAL 7047S



RAL 8007S



RAL 9003S



RAL 9005S



RAL 9010S



RAL 9011S

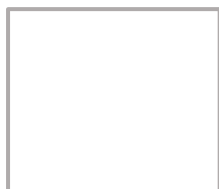


RAL 9016S

Metalwork colour palette - textured finish

APMG recommends a textured finish for metal cantilever legs and table frames due to its resilience and durability.

Textured finish colour palette



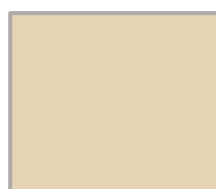
RAL 9003T



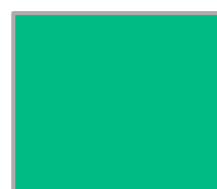
BS 08B17T



BS 10B15T



RAL 1015T



RAL 5012T



RAL 5015T



RAL 5023T



BS 20D45T



BS 00A05T



RAL 7035T



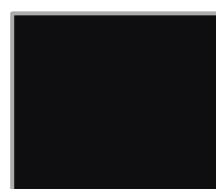
RAL 7037T



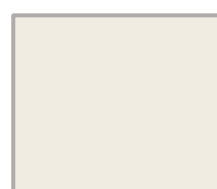
RAL 7012T



RAL 7021T



RAL 9005T



RAL 9010T

Gratnell trays



APMG recommends market leading Gratnell trays. They are resistant to the majority of chemicals used in schools and are semi-fire retardant for safety.

Trays are 312 mm wide and 427 mm long. The F1 (75 mm high) and F2 (150 mm high) model trays are practical heights and firm favourites with schools. We hold these in stock in our standard colours. Lids and inserts are also available.

We can easily source F25 (225 mm high) and F3 (300 mm high) trays if these are your preference and if you require a specific colour just ask. See the colour guide below, which also shows which sizes are available in each shade.

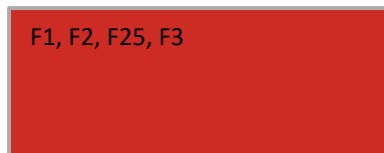
As an authorised Gratnells distributor we can also supply steel storage trollies finished in a hardwearing grey epoxy coating. Fitted with a metal top and industrial grade castors, the double column trolley carries 12 shallow trays, the triple column trolley carries 18.

Alternatively, you can choose the storage frame, fitted with a metal top and adjustable feet.

Tray colour palette

F1, F2, F25, F3	F1, F2, F25, F3	F1, F2
Translucent 20	Light Grey 19	Silver 27
F1, F2, F25, F3	F1, F2, F25, F3	F1, F2, F25
Jet Black 21	Royal Blue 6	Steel Blue 8
F1, F2	F1, F2	F1, F2, F25, F3
Maroon 16	Charcoal Grey 15	Grass Green 10

Gratnell tray colour palette continued



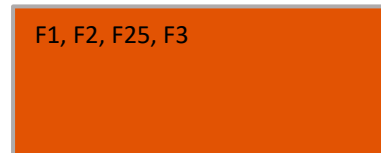
F1, F2, F25, F3

Flame Red 9



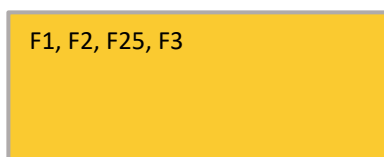
F1, F2

Midnight Blue 17



F1, F2, F25, F3

Tropical Orange 1 ♦



F1, F2, F25, F3

Sunshine Yellow 2 ♦



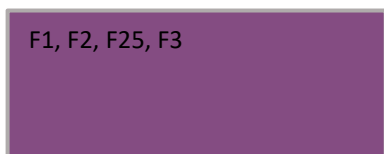
F1, F2

Tan Brown 3 ♦



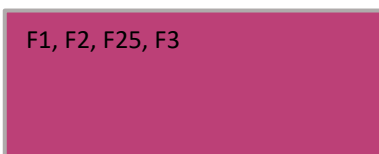
F1, F2

Olive Green 4 ♦



F1, F2, F25, F3

Plum Purple 5 ♦



F1, F2, F25, F3

Fuchsia Pink 7 ♦



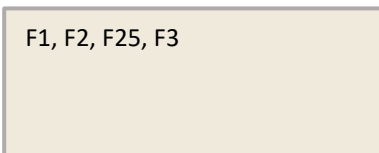
F1, F2

Mushroom Brown 11 ♦



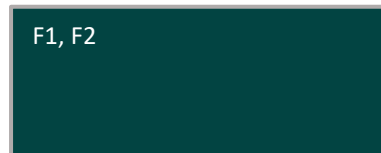
F1, F2

Dark Brown 12 ♦



F1, F2, F25, F3

Magnolia 14 ♦



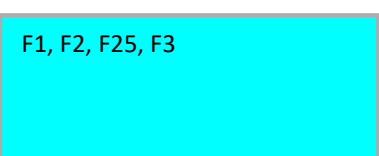
F1, F2

Forest Green 18 ♦



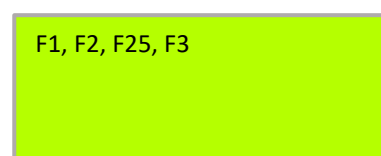
F1, F2

Beige 13 ♦



F1, F2, F25, F3

Cyan Blue 26 ♦



F1, F2, F25, F3

Jolly Lime 36 ♦

